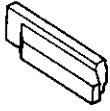
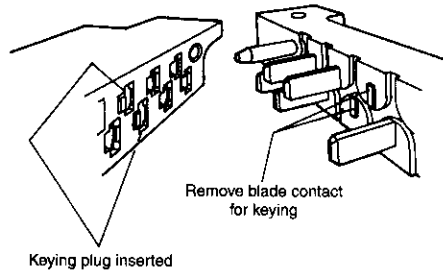


AMP-BLADE Connector Keying

Keying Plugs



Keying Plug — Nylon
Part Number 1-582156-9
Military Part Number 21097/11-07

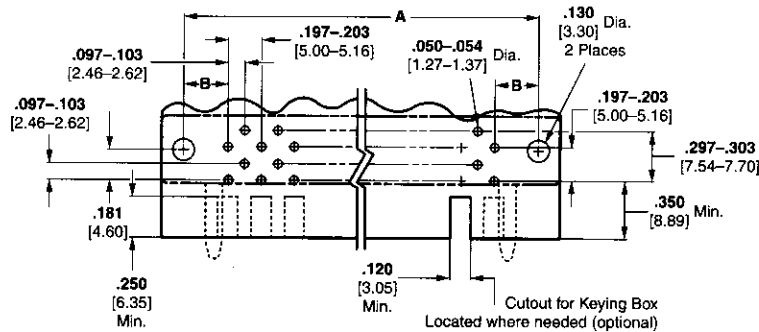


Keying plug inserted

Keying of the connector can be achieved by plugging receptacle cavities. Insert keying plug into mating side of receptacle housing cavity. Remove corresponding blade contact from blade housing using tool number 811145.

Printed Circuit Board Layout

No. of Pos.	Dimensions	
	A	B
17	2.130 54.10	.265 6.73
23	2.730 69.34	.265 6.73
29	3.330 84.58	.265 6.73
35	3.930 99.82	.265 6.73
41	4.530 115.06	.265 6.73
47	5.363 136.22	.381 9.68



Note: If existing printed circuit board layout does not include the two middle rows of holes, Tyco Electronics can supply the connector with the middle rows of tines removed.

Printed Circuit Board Connectors